

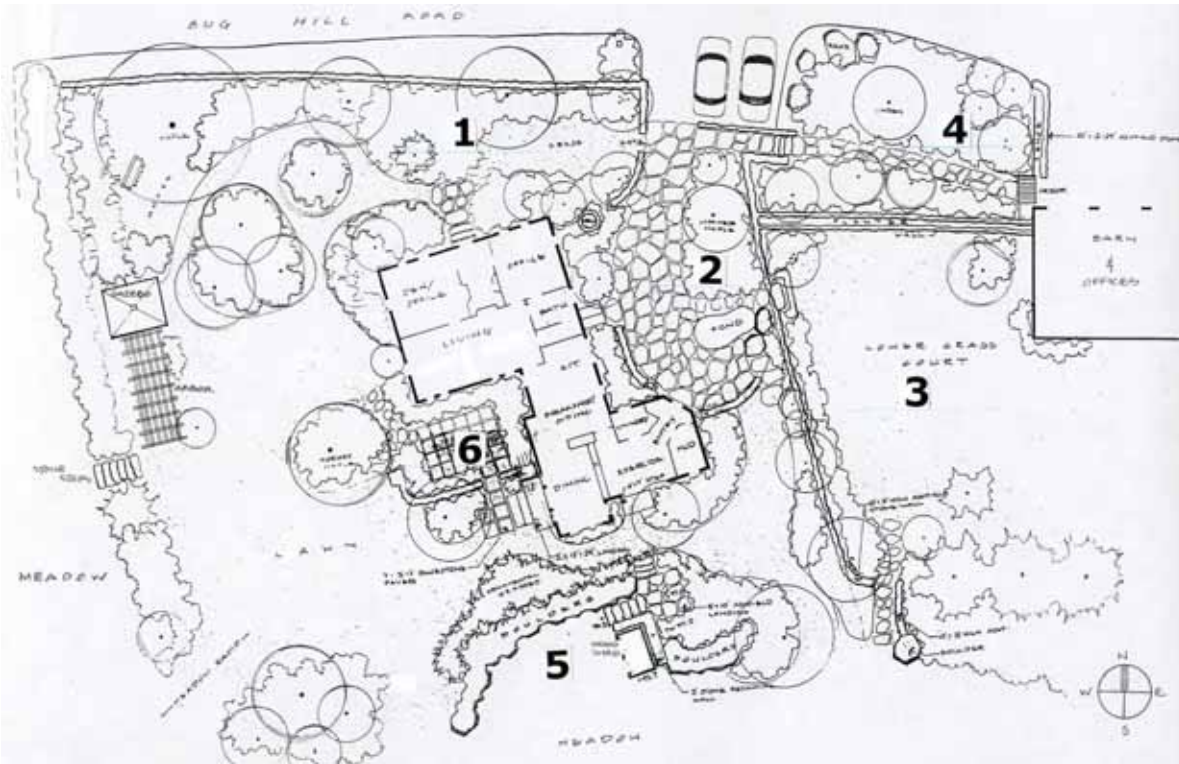


High Meadow Farm
Ashfield, MA

*Office, Studio and Home of
Walter & Susan Cudnohufsky*

Simultaneous architectural and landscape renovations created a perfect fit of buildings to land at this 100-acre former farm. The ever-evolving cottage gardens delight the eye and invite the visitor as they incorporate old barn foundations, screen the office from the home, buffer the road, and expand seamlessly into the meadow and woodlands beyond.

The intensively planted acre around house and barn includes six distinctive zones or outdoor rooms, each of which has its own character.

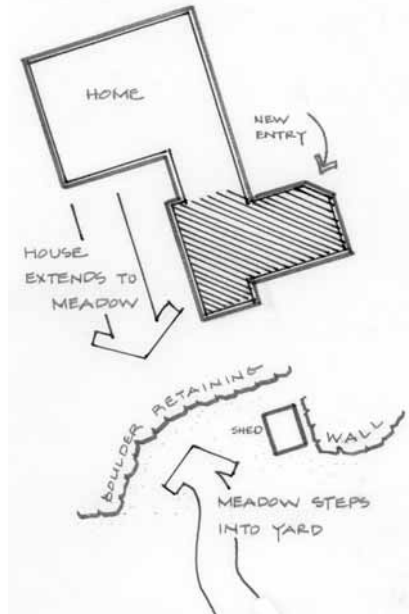


1. The narrow front yard is transformed *into an inviting shade garden, with grassy paths meandering through to a gazebo and meadow view beyond.*



2. A low wall separates the stone entry court from roadside parking, but can support a car when needed for deliveries.

High Meadow Farm, *continued*



3. Four-season interest engages employees as well as residents while providing a gracious separation between work and home

4. Gates, implied and literal, frame the entrances to garden paths beyond.



5. Fieldstone wall embraces the edge of the meadow. Views from the dining room addition sweep from the colorful foreground of native perennials southward across the meadow to the woodland edge.



6. Gardens step into the sunny patio. Prime south-facing nook extends dining room to a sheltered corner with outstanding views.

